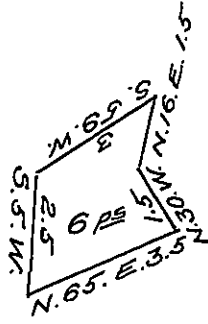


York County Shore



Lancaster County Shore

A Draught of Sand Island situate in the river
Susquehanna in Manor Township Lancaster County opposite
land of Philip Sowers on the East Jacob Musser on the west
between Charles Evans Island & Storey Island & about fifty
perches from the Lancaster shore Containing six perches
Strict measure Surveyed in pursuance of a Warrant dated the
13th August 1814 granted to John Dicks

To Jacob Spangler Esq. }
Surveyor General. }

Jacob Hibshman D.S.

IN TESTIMONY that the above is a copy of the original remaining on file in
the Department of Internal Affairs of Pennsylvania, made
comformably to an Act of Assembly approved the 16th day of
February 1833, I have hereunto set my hand and caused
the Seal of said Department to be affixed at Harrisburg,
this thirteenth day of December 1907.

Henry Howard

Secretary of Internal Affairs.